

The Behind-the-Scenes Clarity Check

A gentle check-in to see what's working and where you may not need to carry it alone.

Take five quiet minutes. No fixing. Just noticing.

When it comes to your systems...

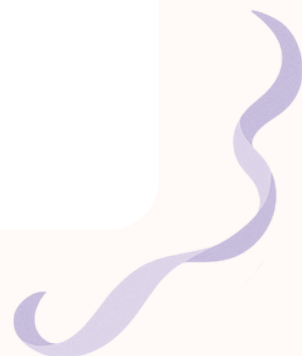


- ➔ Do you have platforms you've stopped using because they feel confusing?
- ➔ Are you paying for tools you don't fully understand?
- ➔ Have you added systems because someone said you "should"?
- ➔ Are you doing things manually that could be smoother?
- ➔ Do your tools support how you actually work... or do you work around them?

When it comes to your time...



- ➔ Are you checking off tasks all day while your list keeps growing?
- ➔ Do you end the day unsure what you actually finished?
- ➔ Are small tech or admin issues interrupting bigger work?
- ➔ Are you handling tasks someone else could take off your plate?
- ➔ Does everything feel important at once?






When it comes to your load...



- ➔ Are most of your processes living in your head?
- ➔ Are you the only one who knows how things run?
- ➔ Do you avoid certain tasks because they feel overwhelming?
- ➔ Do you know you need help, but aren't sure where to start?

 *If you answered yes to several of these, that's not a reflection of your ability. It may just mean you're carrying more than you need to.*
